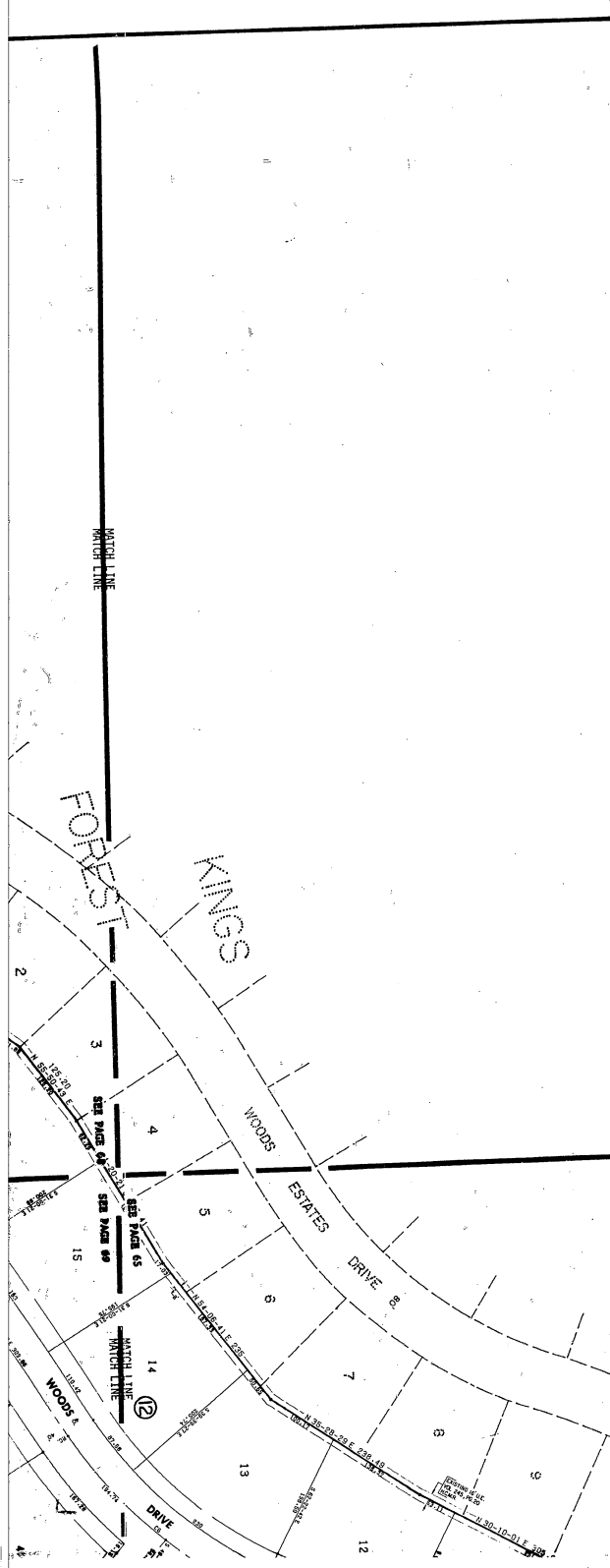
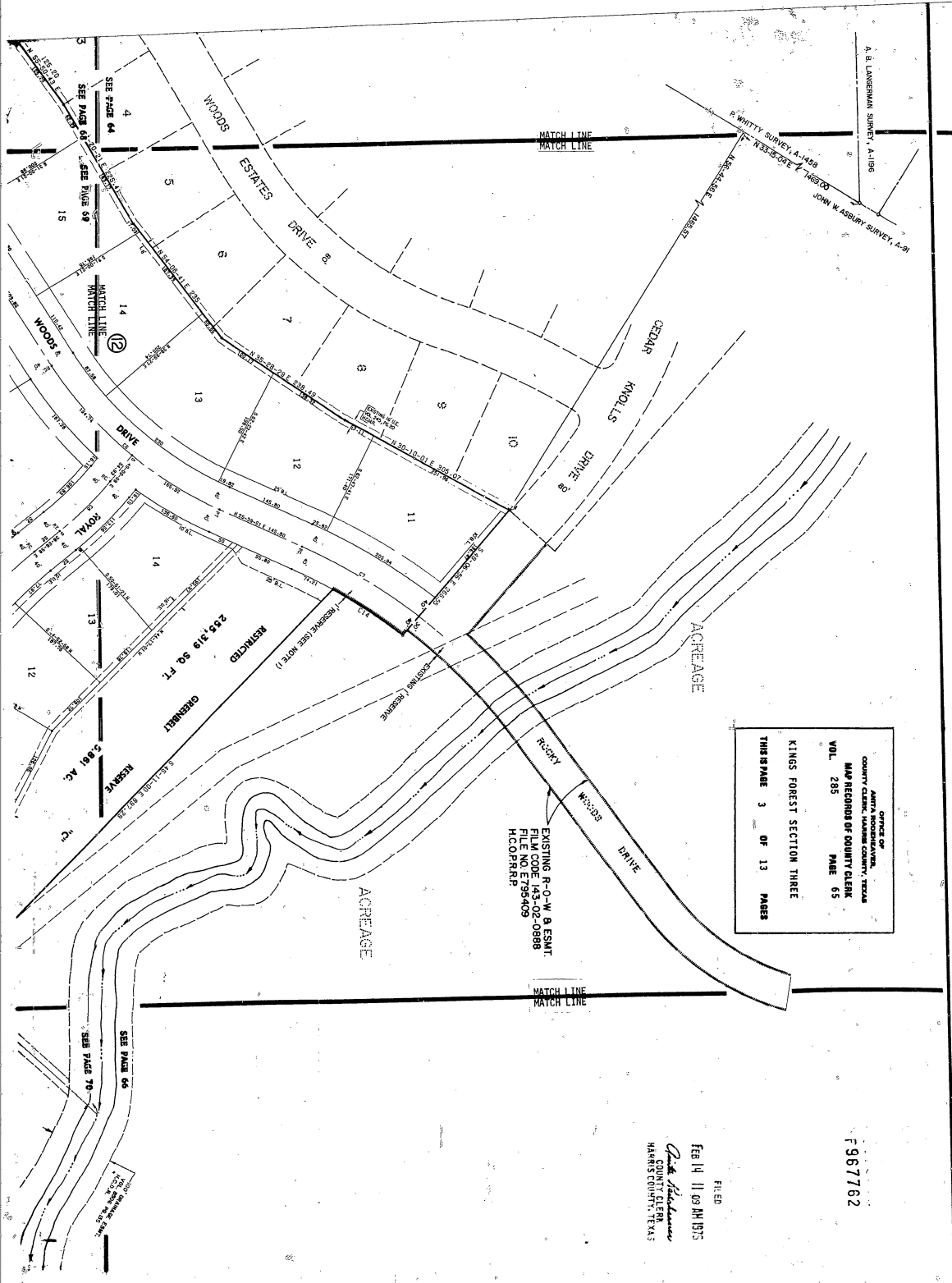


NOTE	RAD	TAN	CHORD	ARC	DELTA	CH BRD
1	800.00	84.01	167.09	167.40	11-59-21	N 16-29-38 H
2	1050.00	263.75	511.60	518.80	28-12-2	N 8-23-18 H
3	890.07	359.08	666.00	682.61	43-58-28	N 16-15-31 H
4	1100.00	209.81	412.18	414.63	21-35-49	N 49-1-40 H
5	700.00	140.89	276.24	278.07	22-45-36	N 47-38-51 E
6	620.00	185.60	365.60	360.66	33-19-47	N 42-19-45 E
7	920.00	110.75	219.91	220.44	13-43-42	N 32-31-42 E
8	620.00	57.26	114.03	114.20	10-33-11	S 43-43-34 E
9	710.00	146.34	286.65	288.64	23-17-33	S 50-5-45 E
10	65.00	40.76	69.07	72.81	64-10-59	S 19-47-38 H
11	320.00	99.99	190.88	193.83	34-42-20	S 59-13-46 H
12	710.00	288.05	533.84	547.29	44-9-55	S 39-52-23 H
13	900.00	109.66	218.10	218.63	13-55-7	S 53-23-52 H
14	880.00	67.58	134.76	134.89	8-46-58	S 34-53-16 H
15	2400.00	38.41	76.82	76.82	1-50-2	S 28-12-43 H
16	1940.00	950.52	1707.14	1707.65	52-12-21	S 53-23-52 H
17	3000.00	356.31	707.64	709.30	13-32-48	S 86-16-26 H
18	25.00	25.00	35.36	39.27	89-59-59	N 55-29-58 H
19	800.00	84.01	167.09	167.40	11-59-21	N 16-29-38 H
20	1010.00	253.70	497.11	497.11	28-12-2	N 8-23-18 H
21	25.00	25.32	35.58	39.59	90-43-26	S 34-51-45 M
22	450.00	30.51	60.99	60.93	7-45-29	N 6-37-14 M
23	450.00	78.32	154.33	155.09	19-44-50	N 12-36-54 M



OFFICE OF
 ANITA BROOKHAVEN,
 COUNTY CLERK, HARRIS COUNTY, TEXAS
 MAP RECORDS OF COUNTY CLERK
 VOL. 285 PAGE 64
 KINGS FOREST SECTION THREE
 THIS IS PAGE 2 OF 13 PAGES

A. B. LANGRISH SURVEY, A-1186
 JOHN W. ASBURY SURVEY, A-91
 R. WHITTY SURVEY, A-1458
 1-23-19-50-11-16-50-00



A. B. LANGRISH SURVEY, A-1896

F. WHITTY SURVEY A-1428
 JOHN W. ASBURY SURVEY, A-91

OFFICE OF
 COUNTY CLERK, HARRIS COUNTY, TEXAS
 MAP RECORDS OF COUNTY CLERK
 VOL. 285 PAGE 65
 KINGS FOREST SECTION THREE
 THIS IS PAGE 3 OF 13 PAGES

EXISTING R-O-W & ESMT
 FILM CODE 143-02-0888
 FILED PER
 H.C. ORNBERG

FILED
 FEB 14 11 09 AM 1973
D. A. Holloman
 COUNTY CLERK
 HARRIS COUNTY, TEXAS

F 967762

SEE PAGE 64

SEE PAGE 68

SEE PAGE 69

SEE PAGE 70

SEE PAGE 71

SEE PAGE 72

SEE PAGE 73

SEE PAGE 74

SEE PAGE 75

SEE PAGE 76

SEE PAGE 77

SEE PAGE 78

SEE PAGE 79

SEE PAGE 80

SEE PAGE 81

SEE PAGE 82

SEE PAGE 83

SEE PAGE 84

SEE PAGE 85

SEE PAGE 86

SEE PAGE 87

SEE PAGE 88

SEE PAGE 89

FILED

FEB 14 11 09 AM 1978

Dea. Williams
COUNTY CLERK
HARRIS COUNTY, TEXAS

IN TESTIMONY WHEREOF, HUMBLE INDEPENDENT SCHOOL DISTRICT HAS CAUSED THESE PRESENT TO BE SIGNED BY JOHN B. TURNER, JR., AGENT AND ATTORNEY-IN-FACT FOR HUMBLE INDEPENDENT SCHOOL DISTRICT, HARRIS COUNTY, TEXAS THIS 26th DAY OF FEBRUARY, 1978.

HUMBLE INDEPENDENT SCHOOL DISTRICT

BY *John B. Turner, Jr.*
JOHN B. TURNER, JR., AGENT AND ATTORNEY-IN-FACT
FOR HUMBLE INDEPENDENT SCHOOL DISTRICT

288

STATE OF TEXAS
COUNTY OF HARRIS

BEFORE ME, THE UNDERSIGNED, AUTHORITY ON THIS DAY PERSONALLY APPEARED JOHN B. TURNER, JR., AGENT AND ATTORNEY-IN-FACT FOR HUMBLE INDEPENDENT SCHOOL DISTRICT, KNOWN TO ME TO BE THE PERSON WHOSE NAME IS SUBSCRIBED TO THE FOREGOING INSTRUMENT AND ACKNOWLEDGED TO ME THAT HE SIGNED SAID INSTRUMENT AS THE AGENT AND ATTORNEY-IN-FACT OF SAID DISTRICT AND IN THE CAPACITY THEREIN SET OUT, AND AS THE ACT AND DEED OF SAID CORPORATION.

GIVEN UNDER MY HAND AND SEAL OF OFFICE, THIS 26th DAY OF FEBRUARY, 1978.

Mr. Peter Pierce
NOTARY PUBLIC IN AND FOR HARRIS COUNTY
MY COMMISSION EXPIRES 6-30-79



OFFICE OF
COUNTY CLERK, HARRIS COUNTY, TEXAS
MAP RECORDS OF COUNTY CLERK
VOL. 285 PAGE 66
KINGS FOREST SECTION THREE
THIS IS PAGE 4 OF 13 PAGES

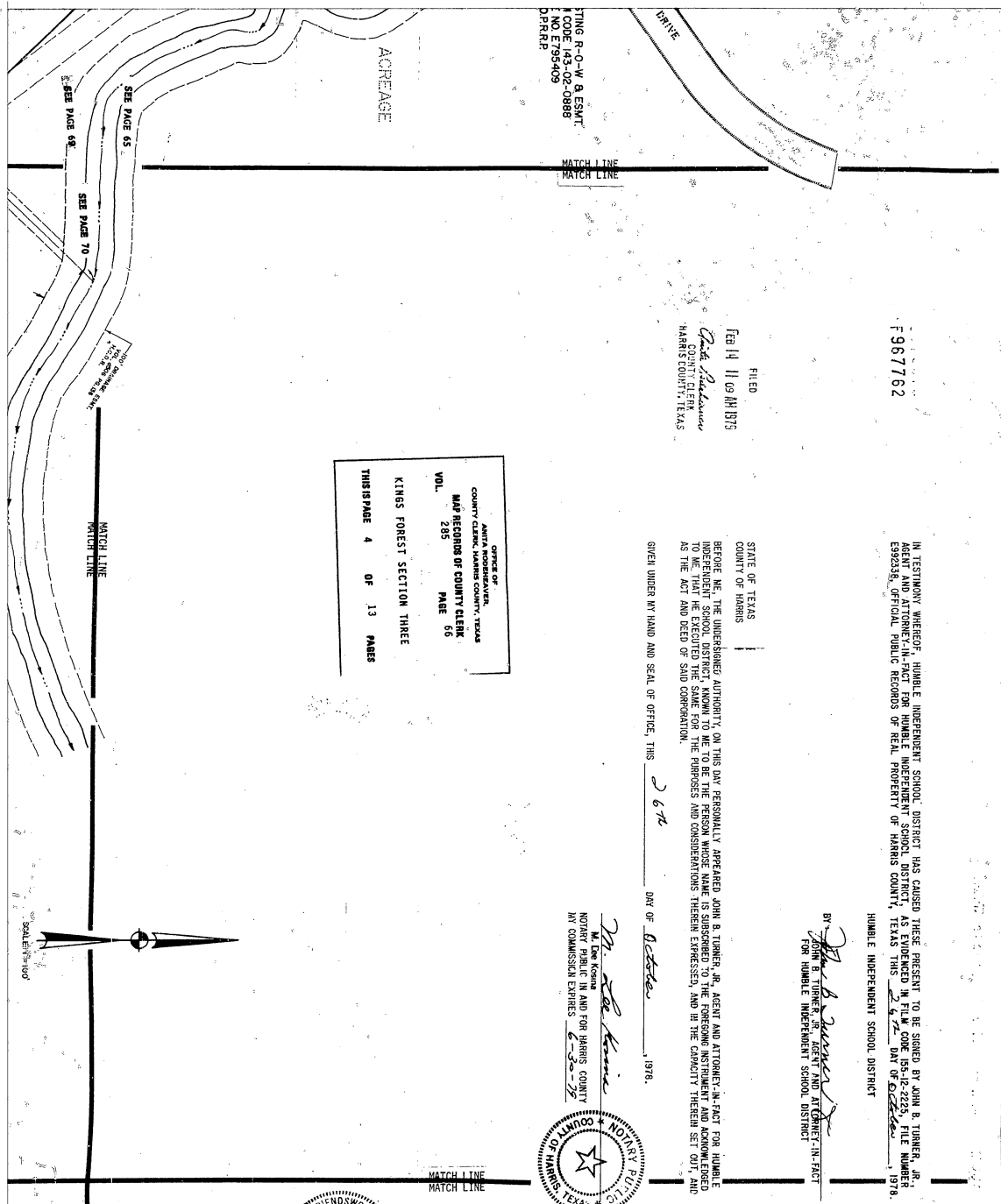


IN TESTIMONY WHEREOF, THE
VICE-PRESIDENT
AND HIS COMMON SEAL HEREON

ATTEST:
B. P. PIERCE, SEER

STATE OF TEXAS
COUNTY OF HARRIS
BEFORE ME, THE UNDERSIGNED
SECRETARY OF THE FRIENDS
WOOD SECTION THREE, AND I
WAS ASSISTED BY THE
AGENTS AND ATTORNEY-IN-FACT
ACTED THEREIN IN THE CAPAC-
ITY OF SAID DISTRICT AND
GIVEN UNDER MY HAND AND SE-

SEE PAGE 67
MATCH LINE
MATCH LINE
SEE PAGE 74



10023
 1978
 NOTARY PUBLIC
 COUNTY OF HARRIS TEXAS
 SEAL
 1980

NOTARY PUBLIC
 COUNTY OF HARRIS TEXAS
 SEAL
 1980

NOTARY PUBLIC
 COUNTY OF HARRIS TEXAS
 SEAL
 1980

NOTARY PUBLIC
 COUNTY OF HARRIS TEXAS
 SEAL
 1980

NOTARY PUBLIC
 COUNTY OF HARRIS TEXAS
 SEAL
 1980

NOTARY PUBLIC
 COUNTY OF HARRIS TEXAS
 SEAL
 1980

NOTARY PUBLIC
 COUNTY OF HARRIS TEXAS
 SEAL
 1980

NOTARY PUBLIC
 COUNTY OF HARRIS TEXAS
 SEAL
 1980

SEE PAGE 66
 MATCH LINE
 SEE PAGE 70

SEE PAGE 66
 MATCH LINE
 SEE PAGE 70

SEE PAGE 66
 MATCH LINE
 SEE PAGE 70

SEE PAGE 66
 MATCH LINE
 SEE PAGE 70

SEE PAGE 66
 MATCH LINE
 SEE PAGE 70

SEE PAGE 66
 MATCH LINE
 SEE PAGE 70

SEE PAGE 66
 MATCH LINE
 SEE PAGE 70

STATE OF TEXAS
 COUNTY OF HARRIS

WE, JOHN B. TURNER, JR. AND B. P. PIERCE, PRESIDENT AND SECRETARY RESPECTIVELY OF THE FRIENDSWOOD DEVELOPMENT COMPANY, AND JOHN B. TURNER, JR. AND B. P. PIERCE, PRESIDENT AND SECRETARY RESPECTIVELY OF THE FRIENDSWOOD DEVELOPMENT COMPANY, TRACT DESCRIBED IN THE ABOVE AND FOREGOING MAP OF KINGS FOREST, SECTION THREE, DO HEREBY MAKE AND ESTABLISH SAID SUBDIVISION AND DEVELOPMENT PLAN OF SAID PROPERTY ACCORDING TO ALL LINES, DETENTIONS, RESTRICTIONS AND EASEMENTS AND TO PROVIDE FOR THE PUBLIC AND HEREBY DECIDE TO THE USE OF THE PUBLIC FOREST FOR THE PURPOSES OF CONSTRUCTION AND MAINTENANCE DRAINAGE FACILITIES AND ALLEYS SHOW WARRANT AND FOREVER DEFEND THE TITLE TO THE LAND SO DEDICATED.

FURTHER, WE DO HEREBY DEDICATE FOR PUBLIC UTILITY PURPOSES AN UNRESTRICTED AERIAL EASEMENT FIVE (5) FEET IN WIDTH FROM A PLACE TWENTY (20) FEET ABOVE THE GROUND LEVEL UPWARD, LOCATED ADJACENT TO ALL PUBLIC UTILITY EASEMENTS SHOWN HEREON.

APPROVED BY
 COUNTY CLERK, HARRIS COUNTY, TEXAS
 MAP RECORDS OF COUNTY CLERK
 PAGE 67
 VOL. 295

FURTHER, WE DO HEREBY DECLARE THAT ALL PARCELS OF LAND DESIGNATED AS LOTS ON THIS PLAN ARE ORIGINALLY INTENDED FOR THE CONSTRUCTION OF RESIDENTIAL DWELLING UNITS THEREON AND SHALL BE RESTRICTED FOR SAME UNDER THE TERMS AND CONDITIONS OF SUCH RESTRICTIONS FILED SEPARATELY.

FURTHER, WE DO HEREBY COVENANT AND AGREE THAT ALL OF THE PROPERTY WITHIN THE BOUNDARIES OF THIS PLAN SHALL BE RESTRICTED TO PREVENT THE DRAINAGE OF ANY SEPTIC TANKS INTO ANY PUBLIC OR PRIVATE STREET, ROAD OR ALLEY OR ANY DRAINAGE DITCH, EITHER DIRECTLY OR INDIRECTLY.

FURTHER, WE DO HEREBY DEDICATE TO THE PUBLIC A STRIP OF LAND FIFTEEN (15) FEET WIDE ON EACH SIDE OF THE CENTER LINE OF ANY AND ALL BAYOUS, CREEKS, GULLIES, RAVINES, DRAINS, SLOUGHS, OR OTHER NATURAL DRAINAGE COURSES LOCATED IN SAID PLAN, AS EASEMENTS FOR DRAINAGE PURPOSES, GIVING THE CITY OF HOUSTON, HARRIS COUNTY OR ANY OTHER AGENCIES AUTHORIZED BY THE CITY OR COUNTY, THE RIGHT TO ENTER UPON SAID EASEMENT AT ANY AND ALL TIMES FOR THE PURPOSES OF CONSTRUCTION AND MAINTENANCE DRAINAGE FACILITIES AND STRUCTURES.

FURTHER, WE DO HEREBY COVENANT AND AGREE THAT ALL OF THE PROPERTY WITHIN THE BOUNDARIES OF THIS PLAN AND ADJACENT TO ANY DRAINAGE EASEMENT, DITCH, GULLY, CREEK OR NATURAL DRAINAGE COURSE SHALL HEREBY BE RESTRICTED TO THE OPERATION AND MAINTENANCE OF THE SAID EASEMENTS CLEAR OF STUMPS, BOLLERS, BRUSH, OR ANY OTHER OBSTRUCTIONS AND MAINTENANCE OF THE DRAINAGE FACILITIES AND STRUCTURES. NO OTHER EASEMENTS OR RIGHTS SHALL BE PERMITTED TO DRAIN DIRECTLY INTO THIS EASEMENT EXCEPT BY MEANS OF AN APPROVED DRAINAGE STRUCTURE.

FURTHER, WE DO HEREBY CERTIFY THAT WE ARE THE OWNERS OF ALL PROPERTY IMMEDIATELY ADJACENT TO THE BOUNDARIES OF THE ABOVE AND FOREGOING PLAT OR PARTS THEREOF AND THAT WE HAVE THE AUTHORITY TO MAKE SUCH DEDICATIONS AND RESTRICTIONS AND TO ESTABLISH AND DEDICATE TO THE PUBLIC UTILITY EASEMENTS SHOWN IN SAID ADJACENT AGREEMENT.

FURTHER, WE DO HEREBY CERTIFY THAT WE ARE THE OWNERS OF ALL PROPERTY IMMEDIATELY ADJACENT TO THE BOUNDARIES OF THE ABOVE AND FOREGOING PLAT OR PARTS THEREOF AND THAT WE HAVE THE AUTHORITY TO MAKE SUCH DEDICATIONS AND RESTRICTIONS AND TO ESTABLISH AND DEDICATE TO THE PUBLIC UTILITY EASEMENTS SHOWN IN SAID ADJACENT AGREEMENT.

FURTHER, WE, FRIENDSWOOD DEVELOPMENT COMPANY AND KING RANCH, INC., HAVE COMPLIED WITH OR WILL COMPLY WITH THE EXISTING HARRIS COUNTY ROAD LAW, SECTION 65.01 AS AMENDED BY CHAPTER 61A, ACTS OF 1973, 6890 LEGISLATURE AND ALL OTHER REGULATIONS HERETOFORE ON FILE WITH THE HARRIS COUNTY ENGINEER AND ADOPTED BY THE COMMISSIONERS' COURT OF HARRIS COUNTY.

WE, CAPITAL NATIONAL BANK, OWNERS AND HOLDERS OF A LIEN AGAINST THE PROPERTY IN PART DESCRIBED IN THE PLAN KNOWN AS KINGS FOREST, SECTION THREE, SAID LIEN BEING EXTENDED BY AND UNDER THE PROVISIONS OF TITLE CODE, SECTION 19.0221 AND FILE NUMBER F56600 OF THE FORECLOSURE RECORDS OF HARRIS COUNTY, TEXAS, DO HEREBY RELEASE SAID LIEN AND ALL THINGS SUBORDINATE TO SAID PLAN SAID LIEN AND WE HEREBY COVENANT THAT WE ARE THE PRESENT OWNERS OF SAID LIEN AND HAVE NOT ASSIGNED THE SAME NOR ANY PART THEREOF.

IN TESTIMONY WHEREOF, THE FRIENDSWOOD DEVELOPMENT COMPANY, ACTING HEREIN FOR ITSELF AND FOR KING RANCH, INC., HAS CAUSED THESE PRESENTS TO BE SIGNED BY JOHN B. TURNER, JR., PRESIDENT, AND B. P. PIERCE, SECRETARY, AND SAID INSTRUMENTS TO BE ATTESTED BY ITS SECRETARY, B. P. PIERCE AND ITS CORPORATE SEAL HERETO AFFIXED THIS 26th DAY OF October, 1978.

FRIENDSWOOD DEVELOPMENT COMPANY - ACTING HEREIN FOR ITSELF AND FOR KING RANCH, INC. - OWNERS

ATTEST:
 B. P. PIERCE, SECRETARY

BY: JOHN B. TURNER, JR., PRESIDENT

STATE OF TEXAS
 COUNTY OF HARRIS

BEFORE ME, THE UNDERSIGNED AUTHORITY, ON THIS DAY PERSONALLY APPEARED JOHN B. TURNER, JR., PRESIDENT AND B. P. PIERCE, SECRETARY OF THE FRIENDSWOOD DEVELOPMENT COMPANY, BOTH OF WHOM CLAIM TO BE THE SAME PERSONS WHO ARE SUBSCRIBED TO THE FOREGOING INSTRUMENT, AND I HAVE EXAMINED THE SAID INSTRUMENT AND THE CAPACITY THEREIN SET OUT, AND AS THE ACT AND DEED OF SAID CORPORATION, WHICH CORPORATION ACTED THEREIN IN THE CAPACITIES THEREIN STATED.

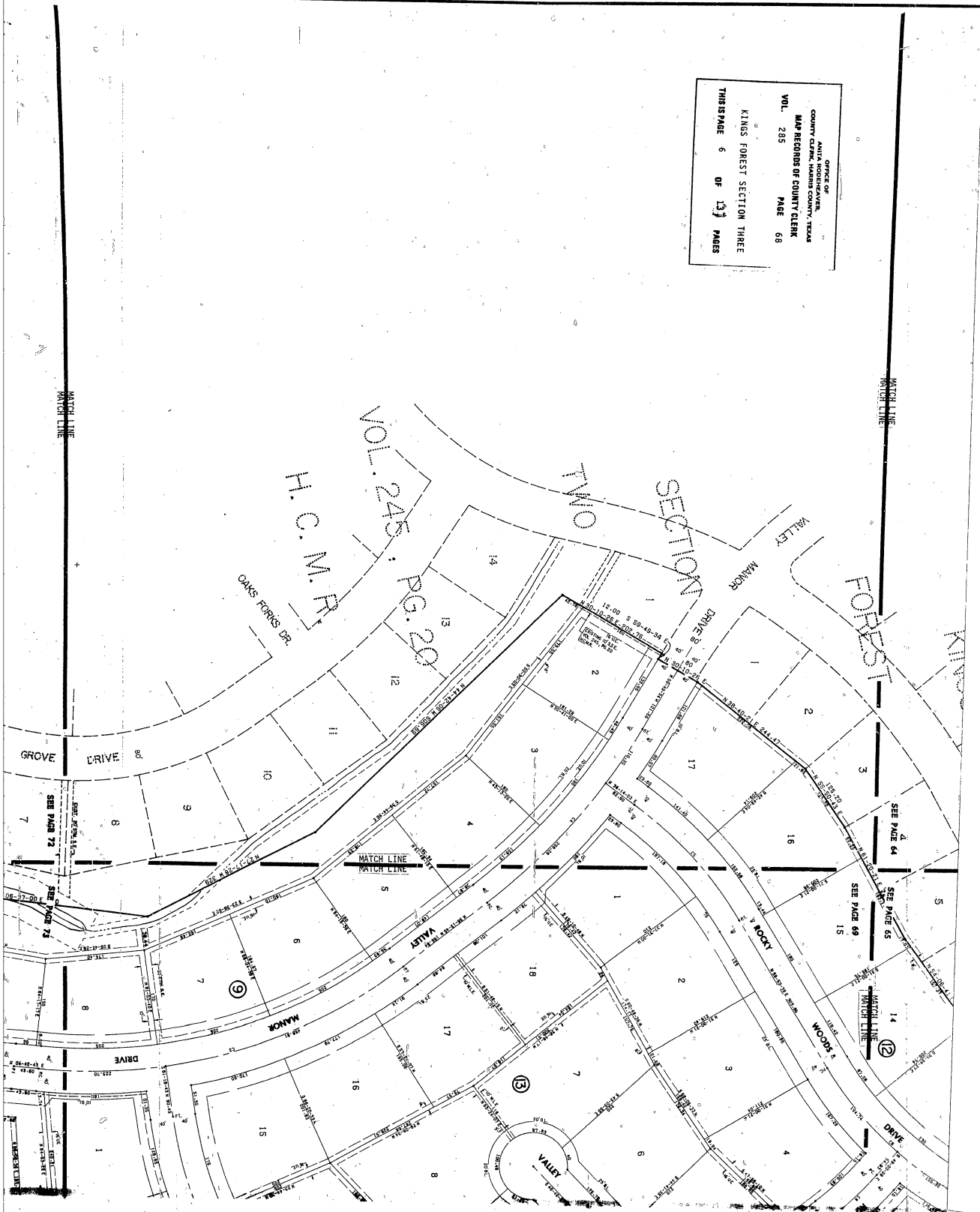
GIVEN UNDER MY HAND AND SEAL OF OFFICE, THIS 26th DAY OF October, 1978.

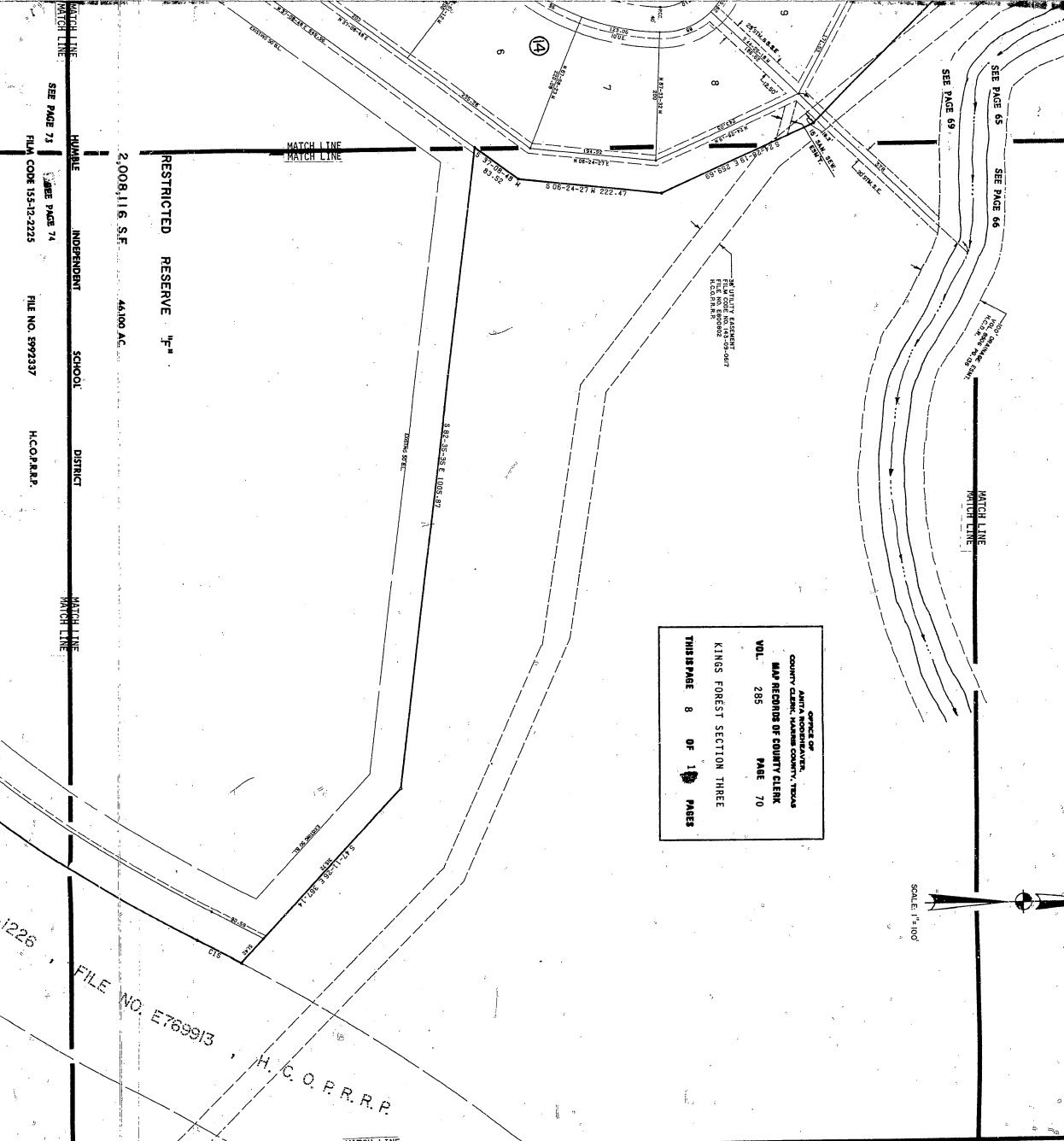
NOTARY PUBLIC
 COUNTY OF HARRIS TEXAS
 SEAL
 1980

IN TESTIMONY WHEREOF, CAPITAL NATIONAL BANK HAS CAUSED THESE PRESENTS TO BE SIGNED BY GARY A. BROOK, VICE-PRESIDENT AND ITS COMMON SEAL HERETO AFFIXED THIS 26th DAY OF October, 1978.

LENDHOLDER
 GARY A. BROOK, VICE-PRESIDENT

OFFICE OF
ANALYST
COUNTY CLERK, HARRIS COUNTY, TEXAS
MAP RECORDS OF COUNTY CLERK
VOL. 285 PAGE 68
KINGS FOREST SECTION THREE
THIS PAGE 6 OF 13 PAGES





OFFICE OF
 JAMES H. WATKINS
 COUNTY CLERK, HARRIS COUNTY, TEXAS
 MAP RECORDS OF COUNTY CLERK
 VOL. 285 PAGE 70
 KINGS FOREST SECTION THREE
 THIS IS PAGE 8 OF 1 PAGES



SEE PAGE 67
 MATCH LINE
 SEE PAGE 71

IN TESTIMONY WHEREOF,
 I, JAMES H. WATKINS, COUNTY CLERK,
 AND ITS COMMON SEAL, BE

ATTEST:
 P. CHRIS HOLDEN
 COUNTY CLERK

STATE OF TEXAS
 COUNTY OF HARRIS
 BEFORE ME, THE UNDERSIGNED,
 AND P. CHRIS HOLDEN, COUNTY CLERK,
 WHOSE NAMES ARE SUBSCRIBED
 AND WHOSE POSITIONS ARE
 CORRECTLY SET FORTH IN THE
 FOREGOING INSTRUMENT,
 GIVEN UNDER MY HAND AND

THIS IS TO CERTIFY THAT I
 HAVE FROM AN ACTUAL SURVEY
 WITH 5/8" DIAMETER RODS
 CITY OF HOUSTON SURVEY
 ESTABLISHED WITHIN



THIS IS TO CERTIFY THAT I
 HAVE FROM AN ACTUAL SURVEY
 WITH 5/8" DIAMETER RODS
 CITY OF HOUSTON SURVEY
 ESTABLISHED WITHIN

1. G. H. SMITH, FLD
 COUNTY CLERK
 THE COMMISSIONERS
 ON THE INTERCEPTING

APPROVED BY THE
 COMMISSIONER, PREC.
 TOM BASS

COMMISSIONER, PREC.
 R. T. ECKERS

1. JAMES H. WATKINS
 WITH ITS COUNTY CLERK
 A. M. T. II
 WITNESS MY HAND AND

FILE NO. E769913
 H. C. O. R. R. P.

2,008,116 S.F. 4A100 AC.
 RESTRICTED RESERVE
 HUMANLY INDEPENDENT SCHOOL DISTRICT
 H.C.O.R.R.P.

SEE PAGE 73
 FILE CODE 15-12-2225

SEE PAGE 74
 FILE NO. 8992337

SEE PAGE 75

SEE PAGE 66
SEE PAGE 70

SEE PAGE 67
MATCH LINE
MATCH LINE

FILE NO. E769913

H. C. O. P. R. R.

SEE PAGE 74

SEE PAGE 75



GIVEN UNDER MY HAND AND SEAL OF OFFICE, THIS 26th DAY OF October, 1978.

IN TESTIMONY WHEREOF, CAPITAL NATIONAL BANK, HAS CAUSED THESE PRESENTS TO BE SIGNED BY GARY A. BROWN, VICE-PRESIDENT AND PHOENIX HOLDERS, REAL ESTATE OFFICER, AND ITS COMMON SEAL HERETOBY AFFIXED THIS 12th DAY OF DECEMBER, 1978.



ATTEST: John H. [Signature]
PHOENIX HOLDER, REAL ESTATE OFFICER
STATE OF TEXAS
COUNTY OF HARRIS

BY: Gary A. Brown
GARY A. BROWN, VICE-PRESIDENT
LITENHOLDER

GIVEN UNDER MY HAND AND SEAL OF OFFICE, THIS 12th DAY OF DECEMBER, 1978.

BY: Paul D. Rusing
PAUL D. RUSING - PROFESSIONAL ENGINEER
TEXAS REGISTRATION NO. 27409

THIS IS TO CERTIFY THAT I, PAUL D. RUSING, A REGISTERED ENGINEER OF THE STATE OF TEXAS, HAVE PLATTED THE ABOVE SUBDIVISION FROM AN ACTUAL SURVEY OF THE GROUND, AND THAT THE PLAT BOUNDARY OR CORNERS HEREOF HAVE NOT BEEN TIED INTO THE OFFICIAL CITY OF HOUSTON SURVEY SYSTEM IN COMPLIANCE WITH ORDINANCE NO. 69-1978, BECAUSE A CITY SURVEY MARKER HAS NOT BEEN ESTABLISHED WITHIN 2000 FEET ON THIS PROPERTY.

BY: Richard P. Doss
RICHARD P. DOSS - COUNTY ENGINEER

THIS IS TO CERTIFY THAT THE CITY PLANNING COMMISSION OF THE CITY OF HOUSTON, TEXAS HAS APPROVED THIS PLAT AND SUBDIVISION OF KINGS FOREST, TEXAS REGISTRATION NO. 27409. THE RECORDING OF THIS PLAT THIS 17th DAY OF January, 1978.

ATTEST: Roscoe W. Jones
ROSCOE W. JONES, SECRETARY - ENGINEER

BY: John Stewart
JOHN STEWART, CHAIRMAN

I, RICHARD P. DOSS, COUNTY ENGINEER OF HARRIS COUNTY, DO HEREBY CERTIFY THAT THE PLAT OF THIS SUBDIVISION COMPLETES WITH ALL OF THE EXISTING RULES AND REGULATIONS OF THIS OFFICE AS ADOPTED BY THE COMMISSIONERS' COURT, AND FURTHER, THAT IT COMPLES OR WILL COMPLY WITH THE HARRIS COUNTY ROAD LAW, ALSO INCLUDING SECTION 31-C AS AMENDED BY CHAPTER 914, SECS OF 1973, 63RD LEGISLATURE.

BY: Richard P. Doss
RICHARD P. DOSS, COUNTY ENGINEER

I, G. H. SMITH, FLOOD CONTROL DIRECTOR OF HARRIS COUNTY FLOOD CONTROL DISTRICT, HARRIS COUNTY, TEXAS, DO HEREBY CERTIFY THAT THE PLAT OF THIS SUBDIVISION COMPLETES WITH REQUIREMENTS FOR INTERCEPTORS FOR INTERCEPTOR OF DRAINAGE FROM THIS SUBDIVISION ON THE INTERCEPTING DRAINAGE ARTERY OR PAVEMENT STREET, OR ON ANY OTHER AREA OR SUBDIVISION WITHIN THE WATERSHED.

BY: G. H. Smith
G. H. SMITH, DIRECTOR

APPROVED BY THE COMMISSIONERS' COURT OF HARRIS COUNTY, TEXAS, THIS 12th DAY OF February, 1978.

COMMISSIONER, PRECINCT 1
Tom Bass

COMMISSIONER, PRECINCT 2
John Fonteno

COMMISSIONER, PRECINCT 3
R. V. Eckles

COMMISSIONER, PRECINCT 4
E. A. Lyons, Jr.

COMMISSIONER, PRECINCT 5
[Signature]

COMMISSIONER, PRECINCT 6
[Signature]

CLERK OF THE COUNTY COURT OF HARRIS COUNTY, TEXAS, DO HEREBY CERTIFY THAT THE WRITING INSTRUMENT WITH ITS CERTIFICATE OF RECORDATION WAS FILED FOR REGISTRATION IN MY OFFICE ON Feb 14, 1978, AT 9:58 O'CLOCK A.M., AND ONLY RECORDED ON Feb 14, 1978, AT 9:58 O'CLOCK A.M., IN VOLUME 483 PAGE 63 OF RECORD OF MAPS FOR SAID COUNTY.

WITNESS MY HAND AND SEAL OF OFFICE AT HOUSTON, THE DAY AND DATE LAST ABOVE WRITTEN.

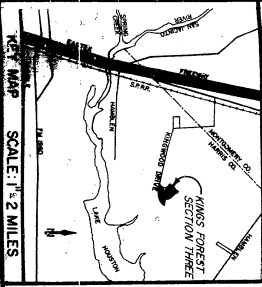


STATE OF TEXAS
COUNTY CLERK, HARRIS COUNTY, TEXAS
MAP RECORDS OF COUNTY CLERK
VOL. 285
PAGE 71

KINGS FOREST SECTION THREE
THIS IS PAGE 9 OF 9 PAGES

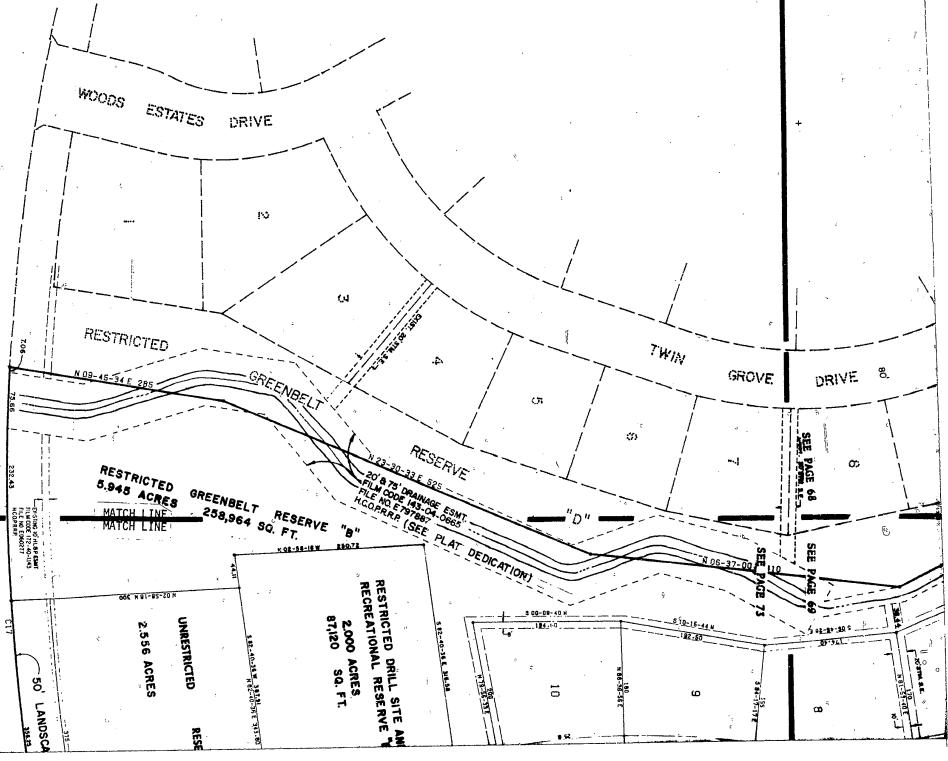
ANITA BOEHLER, CLERK

OFFICE OF
 ANITA ROBINSON
 COUNTY CLERK, HARRIS COUNTY, TEXAS
 MAP RECORDS OF COUNTY CLERK
 VOL. 285 PAGE 72
 KINGS FOREST SECTION THREE
 THIS IS PAGE 10 OF 13 PAGES



FILM CODE 162-23-0355 ; FILE NO. D86

KINGWOOD LAKE VILLAS
 SECTION FOUR
 VOL. 223, PGS. 8, 11, 12, 13, 14, 15, 16, 17, 18, 19, 20, 21, 22, 23, 24, 25, 26, 27, 28, 29, 30, 31, 32, 33, 34, 35, 36, 37, 38, 39, 40, 41, 42, 43, 44, 45, 46, 47, 48, 49, 50, 51, 52, 53, 54, 55, 56, 57, 58, 59, 60, 61, 62, 63, 64, 65, 66, 67, 68, 69, 70, 71, 72, 73, 74, 75, 76, 77, 78, 79, 80, 81, 82, 83, 84, 85, 86, 87, 88, 89, 90, 91, 92, 93, 94, 95, 96, 97, 98, 99, 100



MATCH LINE

SEE PAGE 68

SEE PAGE 69

SEE PAGE 70

SEE PAGE 71

SEE PAGE 72

SEE PAGE 73

2,008,116 S.F. 48100 AC

SEE PAGE 69
SEE PAGE 70
SEE PAGE 73
FILM CODE 135-12-2225
FILE NO. 8992337
H.C.O.P.R.A.P.
SCHOOL DISTRICT

MATCH LINE
MATCH LINE
MATCH LINE

ROAD DRIVE

(VARYING WIDTH)

RESTRICTED LANDSCAPE RESERVE '05'

2.919 AC.

127,152 SQ. FT.

FILM CODE 141-09-1226

FILE NO.

ACREAGE

SEE PAGE 71
SEE PAGE 75

COMMISSIONER
R. T. COLEMAN
1. Having Examined
WITH ITS CERT
WITNESS MY HAND

OFFICE OF
COUNTY CLERK
COUNTY OF DALLAS COUNTY, TEXAS
MAP RECORDS OF EQUITY CLERK
VOL. 285 PAGE 74
KINGS FOREST SECTION THREE
THIS PAGE 12 OF 14 PAGES

NOTES

1. ONE-FOOT RESERVE DEDICATED TO THE PUBLIC IN USE AS A BUREAU OF SANITARY ENGINEERING AND PUBLIC HEALTH IN SUBDIVISION PLATS WHERE SUCH STREETS ADJACENT ACREAGE TRACTS, THE CONDITION OF SUCH DEDICATION BEING THAT WHEN THE ADJACENT PROPERTY IS SUBDIVIDED IN A RECORDED PLAT, THE ONE-FOOT RESERVE SHALL THEREAFTER BECOME VESTED IN THE ADJACENT PROPERTY AS SHOWN ON THE PLAT AND THE TITLE HERETO SHALL REVERT TO AND REST IN THE DEDICATOR, HIS HEIRS, ASSIGNS, OR SUCCESSORS."
2. ALL BEARINGS REFERENCED TO THE TEXAS COORDINATE SYSTEM, SOUTH CENTRAL ZONE, TO BE TO THE POINT SHOWN HEREON TO GRID DISTANCES MULTIPLY BY .9999464.
3. ALL BUILDING LINE TRANSITIONS ARE AT 45° ANGLES TO THE STRAIGHT SIDE LOT LINE WHERE THE TRANSITIONS OCCUR.
4. ALL SIDE LOT LINES ARE EITHER PERPENDICULAR OR RADIAL TO THE STREET FRONTAGE UNLESS OTHERWISE NOTED.
5. B.L. INDICATES "BUILDING LINE."
6. U.E. INDICATES "UTILITY EASEMENT."
7. S.S.E. INDICATES "SANITARY SEWER EASEMENT."
8. S.M. S.E. INDICATES "STORM SEWER EASEMENT."
9. W.L.E. INDICATES "WATER LINE EASEMENT."

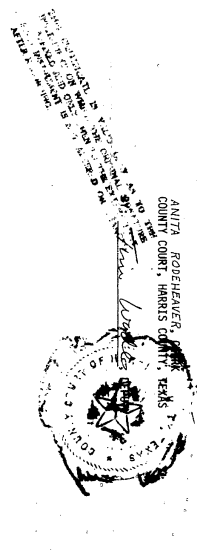
MATCH LINE
MATCH LINE

A S

48 LOTS
SCALE:

TURNER, C
CONSULTANT
HOUSTON

COMMISSIONER, PRECINCT 3
 R. V. ECKELS
 I, *David Rodriguez*, CLERK OF THE COUNTY COURT OF HARRIS COUNTY, TEXAS, DO HEREBY CERTIFY THAT THE WITHIN INSTRUMENT
 WITH ITS CERTIFICATE OF AUTHENTICATION WAS FILED FOR REGISTRATION IN MY OFFICE ON SEP 14 1979 AT 9:28 O'CLOCK
10:00 P.M., IN VOL. 285 PAGE 63 OF RECORD OF BOOKS FOR SAID COUNTY.
 WITNESS MY HAND AND SEAL OF OFFICE AT HOUSTON, THE DAY AND DATE LAST ABOVE WRITTEN.



COMMISSIONER, PRECINCT 4
 E. A. LYONS, JR.
 ANITA, ROOSELWATER,
 COUNTY CLERK, HARRIS COUNTY, TEXAS

OFFICE OF
 COUNTY CLERK, HARRIS COUNTY, TEXAS
 MAP RECORDS OF COUNTY CLERK
 VOL. 285
 PAGE 75
 KINGS FOREST SECTION THREE
 THIS PAGE 13 OF 13 PAGES

KINGS FOREST SECTION THREE

A SUBDIVISION OF 116.893 ACRES IN THE
 JOHN W. ASBURY SURVEY, A-91
 HARRIS COUNTY, TEXAS

48 LOTS "1" = 100' 6 RESERVES 4 BLOCKS
 SCALE: 1" = 100' DECEMBER, 1978

OWNER
 FRIENDSWOOD DEVELOPMENT COMPANY
 HUMBLE INDEPENDENT SCHOOL DISTRICT
 AND
 KING RANCH, INC.

FRIENDSWOOD DEVELOPMENT COMPANY
 JOHN B. TURNER, JR., PRESIDENT
 B. F. FIERCE, SECRETARY
 ACTING FOR ITSELF AND FOR
 KING RANCH, INC.

TURNER, COLLIE & BRADEN, INC.
 CONSULTING ENGINEERS
 PORT ARTHUR
 WILLIAMS & CRAWFORD, INC.
 CITY PLANNING CONSULTANTS
 HOUSTON

JOB NO. 1477-130

